

# The industry leader in **employee identity protection.**

**Protect today.**  
Thrive tomorrow.

Your identity is made up of more than your Social Security number and your bank accounts. That's why Allstate Identity Protection Pro Plus does more than monitor your credit reports and scores. We safeguard your personal information, the data you share, and the relationships you treasure..

And now Allstate Identity Protection Pro Plus® is better than ever. Our proprietary tools stay one step ahead — allowing us to catch fraud at its earliest sign. If something bad happens, you have a in-house expert® available 24/7 to fully manage your recovery and restore your identity.

- **Identity monitoring and alerts**
- **Full-service remediation**
- **Identity theft reimbursement††**
- **iOS and Android app**



## **Our story**

At Allstate Identity Protection, we believe everyone deserves peace of mind. That's why we've been helping companies defend against identity theft for over a decade. Allstate Identity Protection Pro Plus is powered by our enterprise-level proprietary technology and information security — trusted by over 30% of Fortune 500 companies, 3,000 U.S.-based employers, and 2 million employees.

†Identity theft insurance underwritten by insurance company subsidiaries or affiliates of Assurant. The description herein is a summary and intended for informational purposes only and does not include all terms, conditions and exclusions of the policy described. Please refer to the actual policy for terms, conditions, and exclusions of coverage. Coverage may not be available in all jurisdictions.

Allstate Identity Protection Pro Plus is offered and serviced by InfoArmor, Inc., a subsidiary of The Allstate Corporation.

©2019 InfoArmor, Inc. All rights reserved.

# What is identity theft?

When someone uses your personal information without permission to open an account or access your financial records — that's identity theft, and it's a serious crime.



**Every 2 seconds  
an identity is  
stolen in the U.S.<sup>1</sup>**



**120 hours  
on average to resolve identity  
theft on your own<sup>1</sup>**



**\$16.9 Billion lost  
from fraud in  
2019<sup>1</sup>**



**51 times  
higher rate of Child  
Identity Theft than adults**



**7.9 Billion  
personal records  
exposed in the first  
half of 2019 alone <sup>2</sup>**

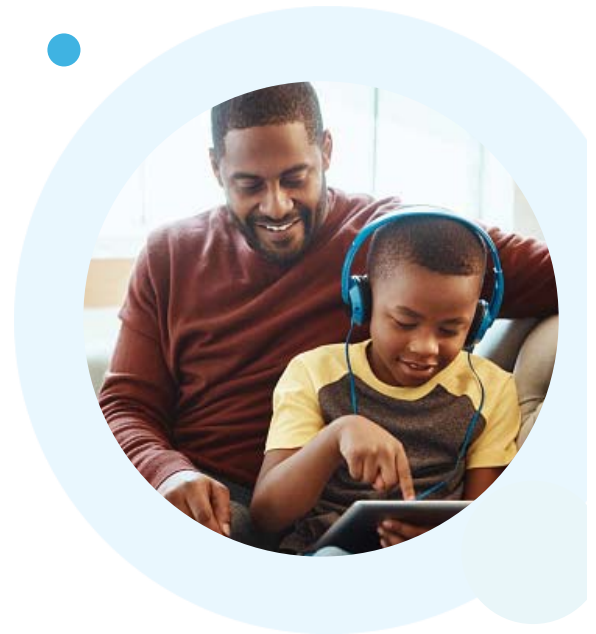


**106 Years  
time to crack 10 letters  
& numbers password**

We go beyond artificial intelligence and dark web “scans.” Unlike other identity protection services, we harness a network of experienced human operatives. This exclusive combination is unique to Allstate Identity Protection and provides insight not only into the dark web but also invitation-only hacker forums. That's how we find what others can't, and help stop identity theft before it starts.

## What we monitor:

- Social Security numbers
- Credit and debit card numbers
- Financial accounts
- Email addresses
- Log-in credentials
- IP addresses
- Dark Web
- And more!



## We've got your back



**Full-service  
remediation  
support**

Our In-house experts are available 24/7 to restore your credit, finances, identity, and sense of security.



**\$1 million  
identity theft  
insurance**

In the unfortunate event that you fall victim to identity theft or fraud, we'll cover many of your out-of-pocket costs.<sup>†</sup>



**Fraud  
reimbursement  
and advances**

We'll reimburse you for stolen funds, including money taken from HSA and 401(k) plans. We'll even advance fraudulent tax refunds.<sup>†</sup>

<sup>1</sup> 2020 Identity Fraud Study, Javelin Strategy and Research  
<sup>2</sup> CNET, "2019 Data Beach Hall of Shame: These were the biggest data breaches of the year", December 2019  
<sup>3</sup> 2019

## Product Features Allstate Identity Protection Pro Plus



### Allstate Digital Footprint

Our unique tool, part of Allstate Identity Protection Pro Plus, helps users see what accounts they have online and detect if personal information has been exposed.



### Comprehensive monitoring and alerts

Our proprietary monitoring platform detects high-risk activity to provide rapid alerts at the first sign of fraud, so participants can detect fraud at its earliest sign, enabling quick restoration for minimal damage and stress.



### Dark web monitoring

In-depth monitoring goes beyond just looking out for a participant's Social Security number. Bots and human intelligence scour closed hacker forums for compromised credentials and other personal information. Then we immediately alert participants who have been compromised.



### High-risk transaction monitoring

We send alerts for non-credit-based transactions like student loan activity and medical billing.



### Account activity

Participants are alerted when unusual activity on their personal banking accounts could be a sign of account takeover.



### Credit monitoring and alerts

We alert for transactions like new inquiries, accounts in collections, new accounts, and bankruptcy filings. Allstate Identity Protection Pro Plus also provides credit monitoring from all three bureaus, which may make spotting and resolving fraud faster and easier.



### Financial activity monitoring

Alerts triggered from sources such as bank accounts, thresholds, credit and debit cards, 401(k)s, and other investment accounts help participants take control of their finances.



### Social media monitoring

Participants can keep tabs on social accounts for everyone in their family, with monitoring for vulgarity, threats, explicit content, violence, and cyberbullying. As an exclusive to Allstate Identity Protection Pro Plus, we monitor for account takeovers that could lead to costly reputation damage.



### IP address monitoring

Exclusive to Allstate Identity Protection Pro Plus, we look for malicious use of our users' IP addresses. IP addresses may contribute to a profile of an individual, which — if compromised — can lead to identity theft.



### Lost wallet protection

Easily store, access, and replace wallet contents. Our secure vault conveniently holds important information from credit cards, credentials, and documents.



### Solicitation reduction

Opt in or out of the National Do Not Call Registry, credit offers, and junk mail.



### Digital exposure reports

Participants can see and identify where their personal information is publicly available on the internet.



### Data breach notifications

We send alerts every time there's a data breach affecting participants so they can take action immediately.



### Credit assistance

Our in-house experts will help participants freeze their credit files with the major credit bureaus. Users can even dispute credit report items from our portal.



### Sex offender notifications

We'll notify participants if a sex offender is registered in a nearby area.



### Mobile app

Access the entire Allstate Identity Protection portal on the go! Available for iOS and Android.



### \$1 million identity theft insurance

If you fall victim to fraud, we will reimburse their out-of-pocket costs.†



†Identity theft insurance underwritten by insurance company subsidiaries or affiliates of Assurant. The description herein is a summary and intended for informational purposes only and does not include all terms, conditions and exclusions of the policies described. Please refer to the actual policies for terms, conditions, and exclusions of coverage. Coverage may not be available in all jurisdictions.

## FAQs

Employee

\$9.95/ month

Employee plus family

\$17.95/ month

### Who is eligible for Allstate Identity Protection Pro Plus?

All employees and their family members are eligible for Allstate Identity Protection Pro Plus. We offer a generous definition of family, using “under roof or under wallet” as our guideline. As long as the dependent lives within your household, or you support the individual financially, they are eligible to enroll at any age.



### When can I enroll?

You can enroll during open enrollment, and you're protected starting on your effective date. That's when you can begin exploring additional features in our easy-to-use portal. The more we monitor, the safer you can be.

### What if my employment status changes?

If you retire or leave your current employer, you can continue your coverage without interruption. We maintain employee information for 90 days beyond termination to ensure seamless portability.

### My bank offers identity protection. Do I need Allstate Identity Protection Pro Plus?

A bank or credit card usually only monitor credit. Not only will Allstate Identity Protection Pro Plus monitor it all, we also fully manage and restore your identity in the case of fraud. Plus, our \$1 million insurance policy and stolen fund reimbursement mean you don't have to cover the costs of recovering your identity or take a hit with stolen funds.†

### Is it safe to give Allstate Identity Protection my information?

Yes. We know that protecting your information is of the utmost importance, so all our employees, consultants, contractors, and vendors adhere to a comprehensive information security policy with interacting with Allstate Identity Protection and its information. We never sell your data for any reason. The safety of your information is very important to us. Our security standards exceed best practices — both for information handling and storage.

†Identity theft insurance underwritten by insurance company subsidiaries or affiliates of Assurant. The description herein is a summary and intended for informational purposes only and does not include all terms, conditions and exclusions of the policy described. Please refer to the actual policy for terms, conditions, and exclusions of coverage. Coverage may not be available in all jurisdictions.

Allstate Identity Protection Pro Plus is offered and serviced by InfoArmor, Inc., a subsidiary of The Allstate Corporation.

©2019 InfoArmor, Inc. All rights reserved.